

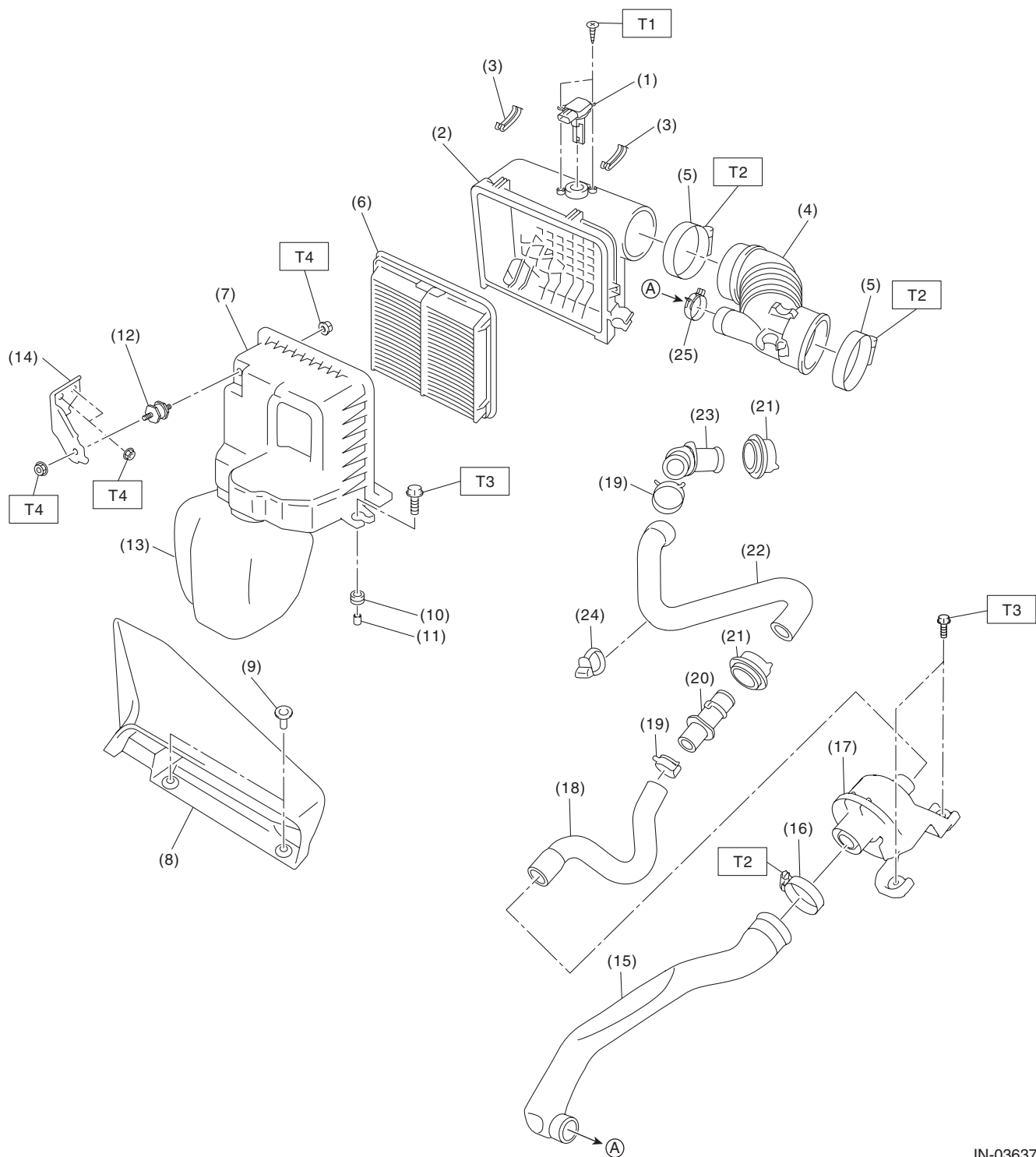
General Description

INTAKE (INDUCTION)

1. General Description

A: COMPONENT

1. AIR CLEANER



IN-03637

General Description

INTAKE (INDUCTION)

(1) Mass air flow and intake air temperature sensor	(12) Cushion	(22) Hose (rear)
(2) Air cleaner case (rear)	(13) Resonator chamber	(23) Connector
(3) Clip	(14) Air cleaner case bracket	(24) Hose clip
(4) Air intake boot	(15) Chamber duct	(25) Clip
(5) Clamp	(16) Clamp	
(6) Air cleaner element	(17) Chamber ASSY	
(7) Air cleaner case (front)	(18) Hose (front)	
(8) Air intake duct	(19) Clip	
(9) Clip	(20) Connector	
(10) Cushion	(21) Grommet	
(11) Spacer		

Tightening torque: N·m (kgf-m, ft-lb)

T1: 1 (0.1, 0.7)

T2: 2.5 (0.3, 1.8)

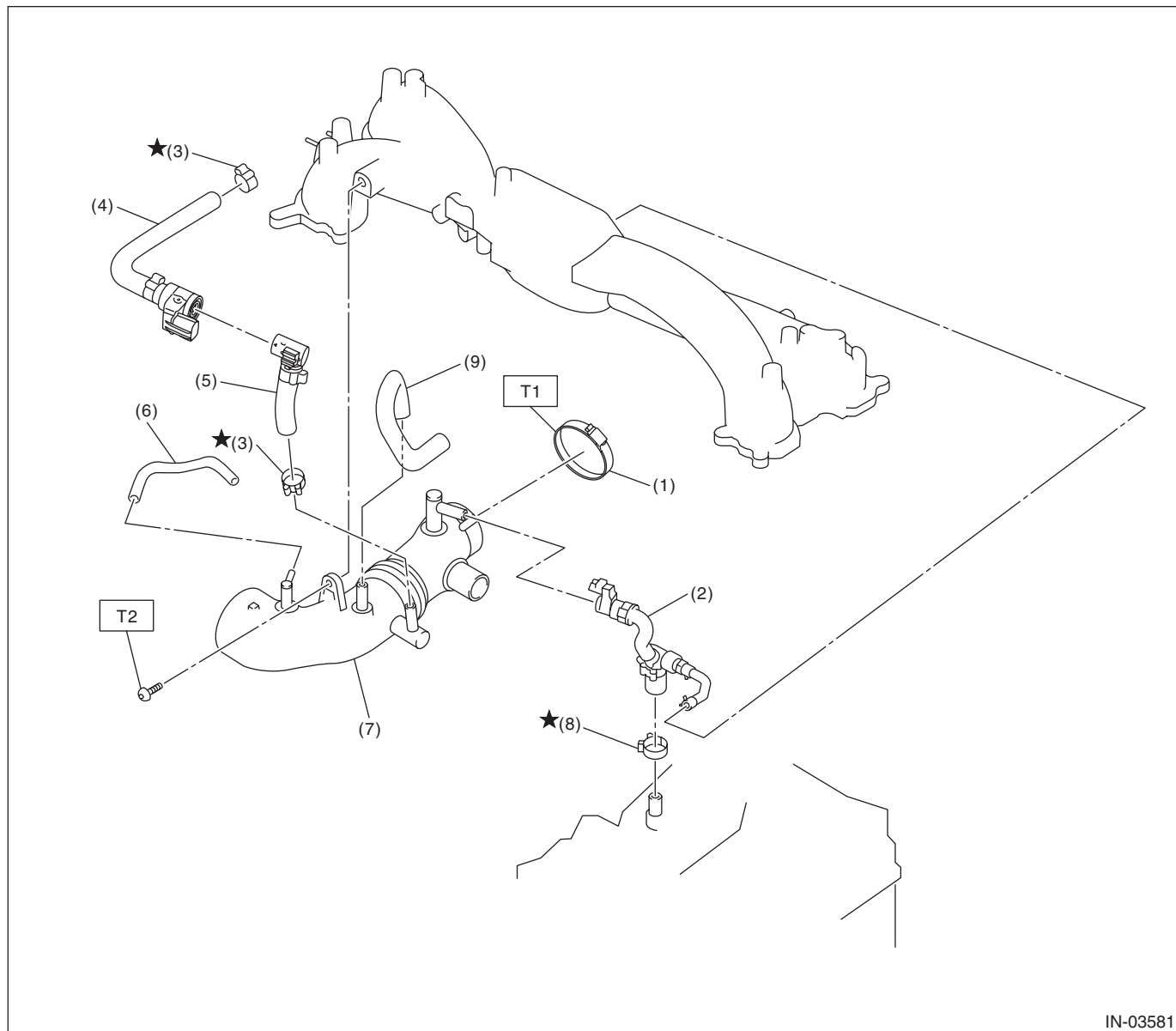
T3: 6 (0.6, 4.4)

T4: 7.5 (0.8, 5.5)

General Description

INTAKE (INDUCTION)

2. INTAKE DUCT



IN-03581

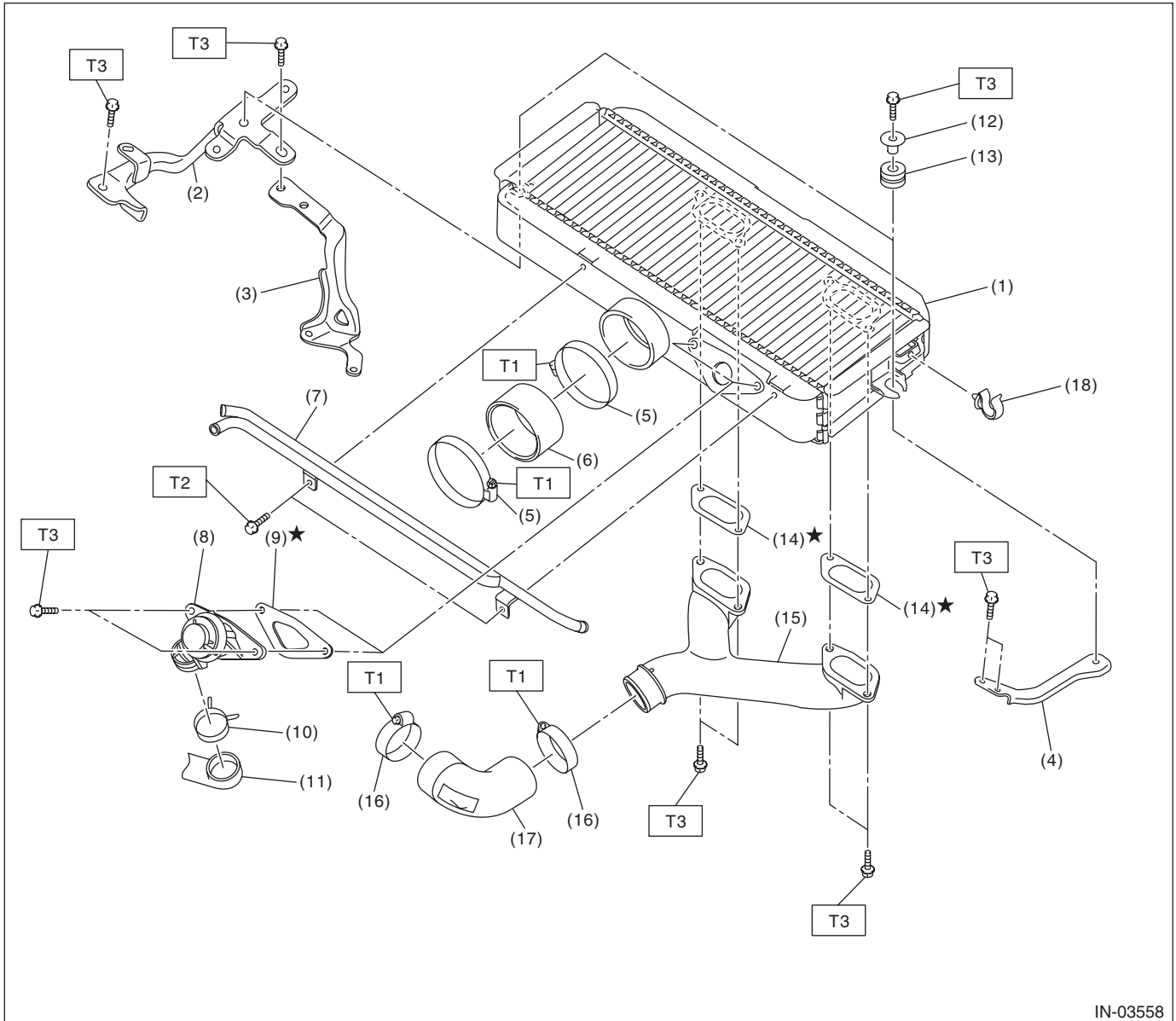
- | | |
|---------------------|-------------------|
| (1) Clamp | (6) Vacuum hose A |
| (2) PCV hose ASSY A | (7) Intake duct |
| (3) Clip | (8) Clamp |
| (4) PCV hose ASSY B | (9) Vacuum hose B |
| (5) PCV hose ASSY C | |

Tightening torque: N·m (kgf-m, ft-lb)

T1: 3 (0.3, 2.2)

T2: 17 (1.7, 12.5)

3. INTERCOOLER



IN-03558

- | | | |
|-------------------------------|-----------------------|------------------|
| (1) Intercooler | (9) Gasket | (17) Intake duct |
| (2) Intercooler stay RH No. 1 | (10) Clip | (18) Clip |
| (3) Intercooler stay RH No. 2 | (11) Air by-pass hose | |
| (4) Intercooler stay LH | (12) Spacer | |
| (5) Clamp | (13) Cushion | |
| (6) Air duct hose | (14) Gasket | |
| (7) PCV pipe | (15) Intercooler duct | |
| (8) Air by-pass valve | (16) Clamp | |

Tightening torque: N-m (kgf-m, ft-lb)

T1: 3 (0.3, 2.2)

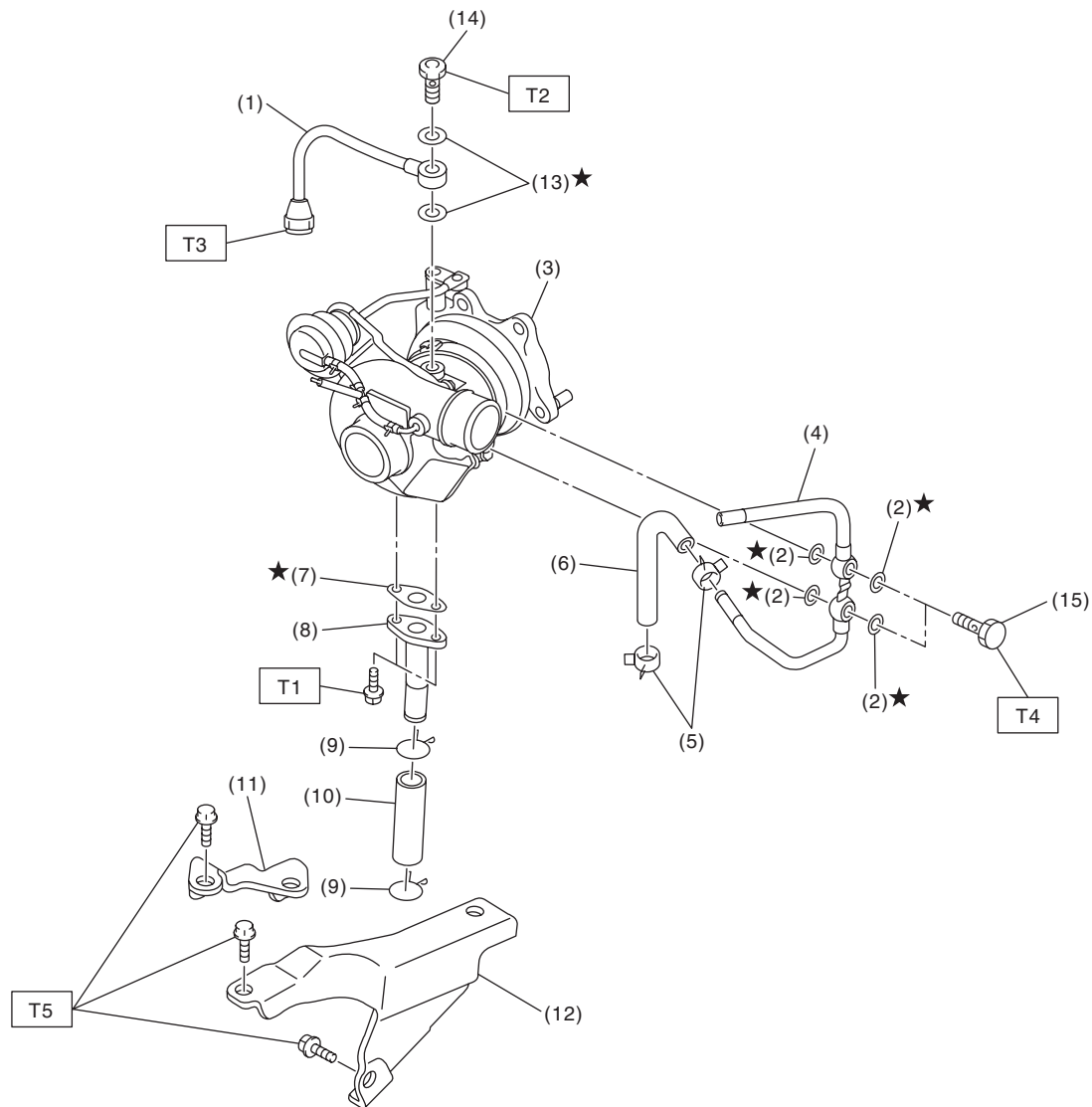
T2: 5.5 (0.6, 4.1)

T3: 16 (1.6, 11.8)

General Description

INTAKE (INDUCTION)

4. TURBOCHARGER



IN-02946

- | | |
|-------------------------|---------------------------|
| (1) Oil inlet pipe | (9) Clip |
| (2) Gasket | (10) Oil outlet hose |
| (3) Turbocharger | (11) Turbocharger stay RH |
| (4) Water pipe | (12) Turbocharger stay LH |
| (5) Clip | (13) Gasket |
| (6) Engine coolant hose | (14) Union bolt A |
| (7) Gasket | (15) Union bolt B |
| (8) Oil outlet pipe | |

Tightening torque: N·m (kgf·m, ft·lb)

T1: 4.9 (0.5, 3.6)

T2: 16 (1.6, 11.8)

T3: 20 (2.0, 14.8)

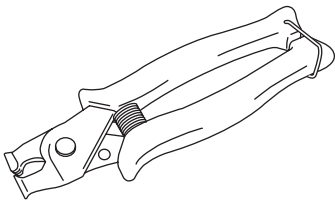
T4: 23 (2.3, 17.0)

T5: 33 (3.4, 24.3)

B: CAUTION

- Prior to starting work, pay special attention to the following:
 1. Always wear work clothes, a work cap, and protective shoes. Additionally, wear a helmet, protective goggles, etc. if necessary.
 2. Protect the vehicle using a seat cover, fender cover, etc.
 3. Prepare the service tools, clean cloth, containers to catch grease and oil, etc.
- Vehicle components are extremely hot immediately after driving. Be wary of receiving burns from heated parts.
- When performing a repair, identify the cause of trouble and avoid unnecessary removal, disassembly and replacement.
- Before disconnecting connectors of sensors or units, be sure to disconnect the ground cable from battery.
- Always use the jack-up point when the shop jacks or rigid racks are used to support the vehicle.
- Remove contamination including dirt and corrosion before removal, installation, disassembly or assembly.
- Keep the removed parts in order and protect them from dust and dirt.
- All removed parts, if to be reused, should be reinstalled in the original positions with attention to the correct directions, etc.
- Bolts, nuts and washers should be replaced with new parts as required.
- Be sure to tighten the fasteners including bolts and nuts to the specified torque.

C: PREPARATION TOOL**1. SPECIAL TOOL**

ILLUSTRATION	TOOL NUMBER	DESCRIPTION	REMARKS
 ST18353AA000	18353AA000	CLAMP PLIERS	<ul style="list-style-type: none"> • Used for removing and installing the PCV hose assembly. • This tool is made by the French company CAILLAU. (code) 54.0.000.205 To make it easier to obtain, it has been provided with a tool number.

2. GENERAL TOOL

TOOL NAME	REMARKS
Mighty Vac	Used for checking waste gate actuator and air by-pass valve.